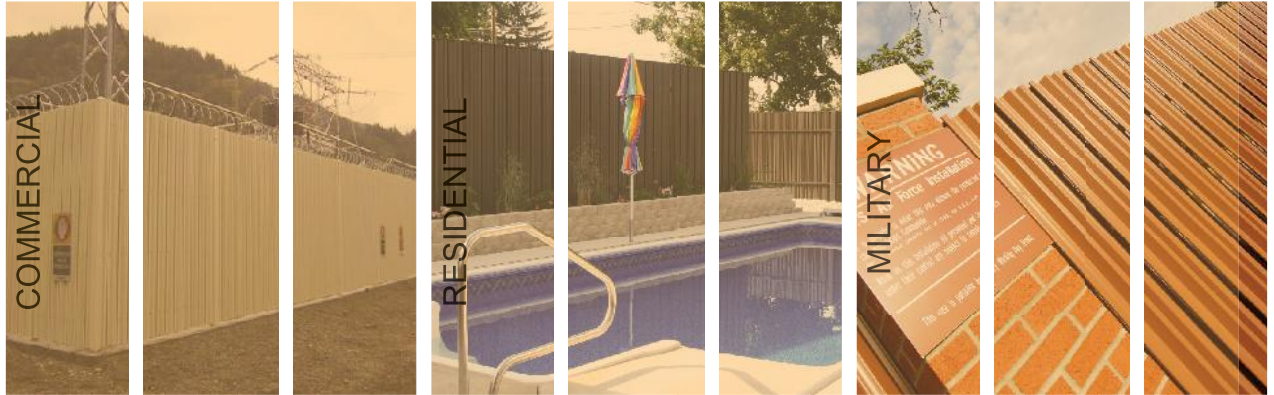


YOUR STRONGEST INVESTMENT IN FENCING



DESIGNED TO IMPRESS
BUILT TO ENDURE

B A S T E E L
PERIMETER SYSTEMS™

**Poly
Vinyl
Creations**



EXPAND YOUR
OUTDOOR
LIVING SPACE.

Residential

Custom-colored and richly textured with the most advanced powdercoat paints in the industry, Basteel blends in perfectly with your environment. Plus, the gentle angles and rounded edges of the precision-formed, high-strength steel give the total installation a sculptured appearance not achieved with ordinary wood, PVC or chain link.

Basteel

Blends in perfectly with your environment.





Basteel

Gives a sculpted appearance unlike ordinary wood, pvc or chain link.

Invest in beauty that is maintenance-free

Adaptable to automatic operator



Residential - Security





Long Runs, HVAC ENCLOSURES

YOUR STRONGEST INVESTMENT FROM ANY ANGLE

At the core, Basteel Perimeter Systems™ feature precision-formed, high-strength steel posts, rails and panels—all galvanized for superior corrosion resistance.

Then, Basteel applies a custom Kynar 500®/Hylar 5000® High Performance Duranar® color-coating oven baked over a primer coat.

When all is said and done, you have a majestic, steadfast fence line that won't warp or rot, and won't burden you with an ongoing maintenance project. No touch-up paint or stain. No tedious repairs or replacements. No problems.

Just 100% made-in-the-USA quality that delivers an unrivaled value over time.



On your order, it's measured in linear feet.

On your site, it's measured in decades.

That's Basteel—the last fencing solution you'll ever need.



AND DUMPSTER ENCLOSURES

Basteel Perimeter Systems feature panels that are finished on both sides. The unique assembly, is depicted by the alternating design which promotes air flow. This is a key feature where circulation is important and where the climate gets intense, a fact validated by Basteel record at withstanding hurricane - force winds.



Constructed around your needs





Basteel's long line of accessory options include top caps, tamper proof fasteners, added security fixtures and several gate designs, including single, double-drive and single- and double-rolling cantilever.

Basteel

Complete Security System

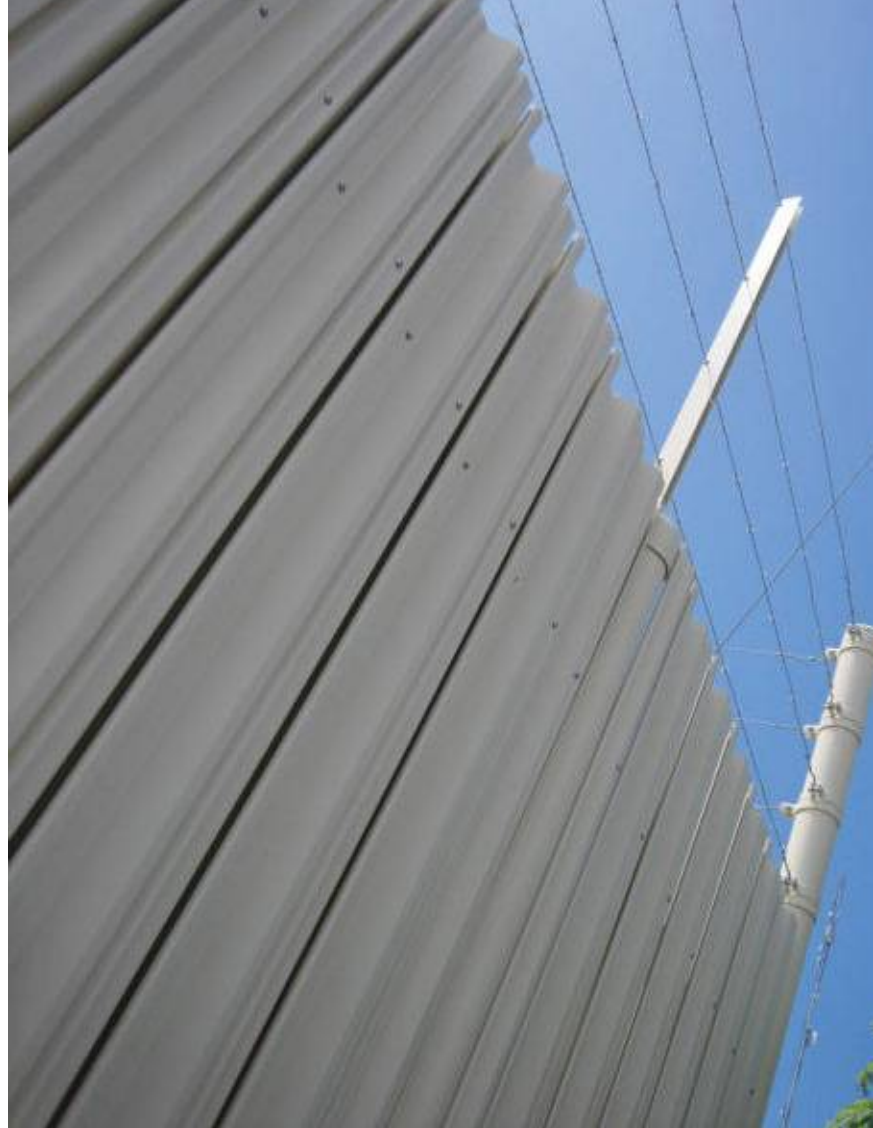


High Security and Screen

Basteel also offers a total private design. This differs from the standard design by assembling panels on just one side of the horizontal rail, inverting every other panel. The result of this process provides total screening that is still rackable.



In applications that call for "heightened" security, Basteel Perimeter Systems is the only option. No other fence alternative can screen heights over 15 feet. Capable of enduring high winds, rooftop applications are a breeze for Basteel's fencing products.



Security in height over 15'



Ingeniously simple design places the rails inside the panels, so your fence can rack to nearly any landscape contour. Each panel can be independently staggered for a perfect "stairstep" installation that is unattainable with other sectional fence products.



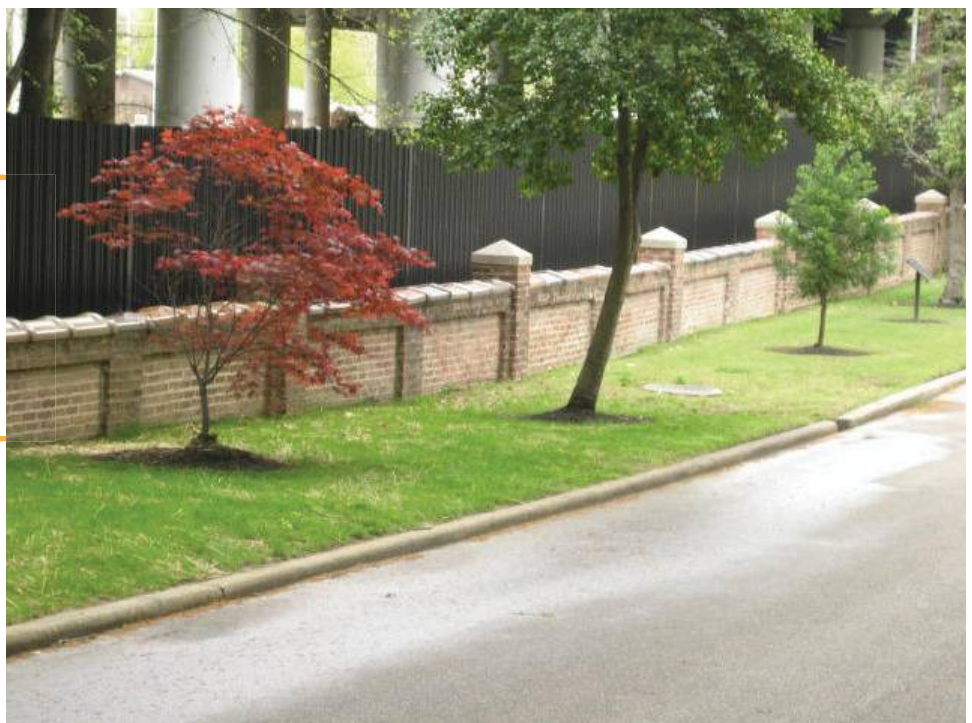
Basteel

The Superior Fence

YOUR STRONGEST INVESTMENT FROM ANY ANGLE



Maintenance-Free
Basteel Perimeter Systems feature
precision cut components all
galvanized for superior
corrosion resistance.



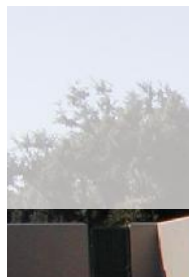
Gate designs are available in single, double-drive and double-rolling cantilever.

CONSTRUCTED AROUND YOUR NEEDS

Basteel Perimeter Systems™ are flexible to your specifications—offering the availability of custom colorization and a wide range of fixtures and accessories to suit your application needs.

Better yet, Basteel maintains a fully staffed engineering department that is ready and able to consult with you regarding a custom-design solution.

When your perimeter system is finally in place, you can relax knowing its unmatched performance characteristics will guard against degradation, so your fence line always stands out, looking great for years and years to come.





HVAC ENCLOSURES

It's your territory.

Claim it.

With a perimeter system that also protects your image.

Dumpster Enclosures

That are built to LAST.



CUSTOM-MADE ENCLOSURES



At the core, Basteel Perimeter Systems™ feature precision-formed, high-strength steel posts, rails and panels—all galvanized for superior corrosion resistance.

Then, Basteel applies a custom Kynar 500® /Hylar 5000® High Performance Duranar® bonded color-coat finish that resists fading, chalking and peeling.

When all is said and done, you have a majestic, steadfast fence line that won't warp or rot, and won't burden you with an ongoing maintenance project. No touch-up paint or stain. No tedious repairs or replacements. No problems.

Just 100% made-in-the-USA quality that delivers an unrivaled value over time.



EXCLUSIVE 15-YEAR WARRANTY

To protect your investment, Basteel Perimeter Systems™ incorporates the most advanced galvanizing and paint processes in existence today.



The patented Flo-Coat® galvanizing process features a synergistic combination of zinc, a chromate conversion coating and a clear, organic topcoat—proven to yield a better application uniformity and greater corrosion resistance than conventional hot-dip galvanizing.



PPG Coatings Protected

Kynar 500®/Hylar 5000® Duranar® coil coatings offer the finest, longest-lasting paint finishes. Chemically inert, they provide unparalleled resistance to color and gloss fade, as well as environmental stress, including that imposed by acid rain and ultraviolet rays.

Bottom line, with Basteel, you get an unprecedented 15-year warranty that covers cracking, chipping, red rust, chalking, peeling and warping.

SPECIFICATIONS

Scope

The following specifications cover design, materials, maintenance, and installation of BaSteel Perimeter Systems

General

Standard sections are 8' nominal in length and include the required number of the horizontal rails, vertical panels, and necessary hardware for assembly. Custom sections are available in lengths shorter than 8' or longer up to 10'.

Shadow Box installation is identical on both sides, with no "front" or "back" facing differences.

Design

Paneling is designed as a horizontal rail and vertical roll formed panel construction.

Paneling can be configured in a shadowbox design (21 vertical panels), which allows for better airflow in high-wind areas, or a total privacy design (25 vertical panels), which allows minimal airflow.

Panels are to be joined at vertical mounting posts anchored in concrete. Refer to local building codes for details.

Materials

Vertical roll formed panels are 0.017 minimum ASTM A-653 Grade 80 full-hard steel, 80,000 psi.

Horizontal rails are 1-1/4" x 1-1/2" x 92-7/16", 14-gauge minimum ASTM A-653 Grade 50 steel, 50,000 psi.

Quantity 2 per 8' section for sections 8' or less in height.

Quantity 3 per 8' section for sections 10' and 12' in height.

Posts are ASTM A-1011 and 3' in length in excess of panel height to allow in-ground anchoring.

For lengths up to 9' posts are 2.875" or 4" in diameter, 8-gauge post 50,000 psi.

For lengths over 9', posts are 4" in diameter, 8-gauge post 50,000 psi. Square post are available.

Screw fasteners and bolts are 302 stainless steel. All drive nails, snap-nuts, and steel inserted U mounts are corrosion resistant. Additional security features are available.

Top channels (4' and 5' high sections, optional on other heights) are 0.017 minimum ASTM A-653 Grade 80 full-hard steel, 80,000 psi.

Sections are disassembled when shipped. All materials and hardware required for installation (excluding concrete) are provided with each 8' section.

Finish

Horizontal rails and vertical panels are galvanized to G-90 specifications. Posts are Allied Zinc Flo-Coat® galvanized conforming to ASTM B-6 specifications.

Panels are bonded with Kynar 500®/Hylar 5000® high-performance Duranar® color coating, oven-baked over a primer coat. Standard finish colors are Canyon Brown, Polar White, Bronze, Cinder Black, Desert Sand, and Patrician Bronze. Custom colors are available.

Horizontal rails, posts, gates, and all hardware, with the exception of nuts and bolts, are finished with oven-baked polyester powder coat paint.

Sizes

Available standard panel heights are 4', 5', 6', 8', 10', and 12'. Assembled panel sections are 8' long (nominal). Actual centerline of posts will be 96-1/2" or 97-1/2", depending on post diameter.

Individual roll formed panels are 5" wide.

Gates

Gates are available as single, double, single-rolling cantilever, and double rolling cantilever gates.

Gates are welded with a silicon bronze welding wire to prohibit rust at the welds.

Gate hinge and truss-rod systems are designed to minimize friction and work with a standard hinge fitting.

Maintenance

BaSteel Perimeter Systems are virtually maintenance-free.

Installation

BaSteel Perimeter Systems are to be installed according to printed installation directions provided by the Bell Machine Company, Inc.

Any and all specifications are subject to change without notice.

Your Distributor of Choice for Vinyl, Steel and Aluminum Products

www.polyvinylc.com

marketing@polyvinylc.com

Corporate: 800-780-3362

Branch (GA,AL,TN,LA): 877-68-FENCE

Branch (NC,SC,VA): 888-PVC-FENCE

B A STEEL
PERIMETER SYSTEMS™

**Poly
Vinyl
Creations**

© 2006 Bell Machine Company, Inc.

Basteel™ and Basteel Perimeter Systems™ are trademarks of Bell Machine Company, Inc.

Duranar® and the PPG logo are registered trademarks of PPG Industries.

Kynar 500® is a registered trademark of Arkema, Inc.

Flo-Coat® and the Allied logotype are registered trademarks of Allied Tube & Conduit, a division of Tyco International Ltd.

Hylar 5000® is a registered trademark of Solvay Solexis, Inc.