



# LOW VOLTAGE LED LIGHTING



Our mission is to provide contractors and homeowners LED lighting solutions that are easy to install, reliable and affordable while offering unsurpassed customer service. Add safety, security, ambiance and increase enjoyment of your outdoor living space.



[www.polyvinylc.com](http://www.polyvinylc.com)

# LOW VOLTAGE LED LIGHTING



## 2' LOW VOLTAGE LED HARNESS



#1626

## 5 OUTPUT SPLITTER - LOW VOLTAGE LED

#1631



## 5' LOW VOLTAGE LED HARNESS



#1627

## 12 WATT POWER SUPPLY WITH PHOTO EYE

Turns on/off by solar sensor



#1589

Will power approximately a maximum of 16 lights

## 7' LOW VOLTAGE LED HARNESS



#1628

## 50 WATT POWER SUPPLY WITH PHOTO EYE, TIMER & REMOTE

Turns on/off by either solar sensor, timer or remote



#1590

Will power approximately a maximum of 65 lights

## 9' LOW VOLTAGE LED HARNESS



#1629

## DIMMER FOR 12 WATT LED LOW VOLTAGE POWER SUPPLY W/ PHOTO EYE

#1669

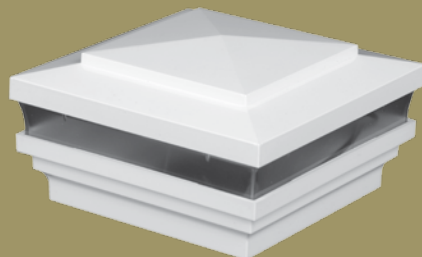


## 2 OUTPUT SPLITTER - LOW VOLTAGE LED



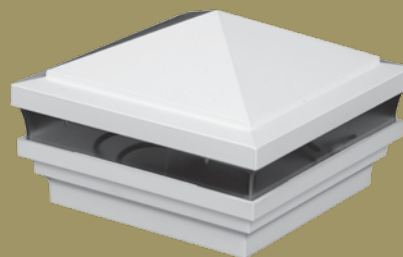
#1630

# CAPE MAY



Sizes	Low Voltage LED	Colors Available
<ul style="list-style-type: none"> <li>• 3-5/8"</li> <li>• 4"</li> <li>• 4-1/2"</li> <li>• 5"</li> <li>• 5-5/8"</li> <li>• 6"</li> </ul>	<ul style="list-style-type: none"> <li>#1486</li> <li>#1487</li> <li>#1561</li> <li>#1508</li> <li>#1509</li> <li>#1510</li> </ul>	<p>White, Almond, Beige, Khaki</p> <p> Available in Designer Finishes</p>

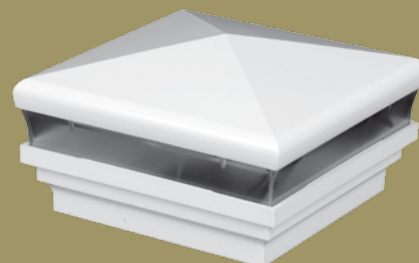
# HAVEN



Sizes	Low Voltage LED	Colors Available
<ul style="list-style-type: none"> <li>• 3-5/8"</li> <li>• 4"</li> <li>• 4-1/2"</li> <li>• 5"</li> <li>• 5-5/8"</li> <li>• 6"</li> </ul>	<ul style="list-style-type: none"> <li>#1488</li> <li>#1489</li> <li>#1565</li> <li>#1511</li> <li>#1512</li> <li>#1513</li> </ul>	<p>White, Almond, Beige, Khaki</p> <p> Available in Designer Finishes</p>



# NEPTUNE

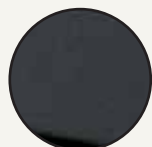


Sizes	Low Voltage LED	Colors Available
<ul style="list-style-type: none"> <li>• 3-5/8"</li> <li>• 4"</li> <li>• 4-1/2"</li> <li>• 5"</li> <li>• 5-5/8"</li> <li>• 6"</li> </ul>	<ul style="list-style-type: none"> <li>#1484</li> <li>#1485</li> <li>#1563</li> <li>#1505</li> <li>#1506</li> <li>#1507</li> </ul>	<p>White, Almond, Beige, Khaki</p> <p> Available in Designer Finishes</p>

## Designer Products

Visit our interactive site [www.designerpostcaps.com](http://www.designerpostcaps.com) for our full product line and to customize your products.

Our Designer product line is an innovative metallic and ceramic powder coated injection molded product line to enhance your fence, deck, and handrails. The Designer product line includes solar lighted post caps, low voltage lighted post caps, post skirts, and a variety of post cap designs using accent colors with textured finishes. They will not tarnish like stamped metal post caps.



**Hammertone  
Black**



**Antique  
Gray**



**Antique  
Brown**



**Antique  
Gold**



**Antique  
Copper**



**Patina**



**Copper  
Platted**



**Silver  
Platted**

CAPE MAY  
DOWNWARD LIGHT



Sizes	Downward LV LED	Colors Available
• 4" • 5"	#1645 #1647	 White, Almond, Beige, Khaki Available in Designer Finishes

CAPE MAY  
SCALLOP LENS LIGHT



Sizes	Scallop LV LED	Colors Available
• 4" • 5"	#1659 #1662	 White, Almond, Beige, Khaki Available in Designer Finishes

HAVEN  
DOWNWARD LIGHT



Sizes	Downward LV LED	Colors Available
• 4" • 5"	#1644 #1648	 White, Almond, Beige, Khaki Available in Designer Finishes

HAVEN  
SCALLOP LENS LIGHT



Sizes	Scallop LV LED	Colors Available
• 4" • 5"	#1661 #1664	 White, Almond, Beige, Khaki Available in Designer Finishes

NEPTUNE  
DOWNWARD LIGHT



Sizes	Downward LV LED	Colors Available
• 4" • 5"	#1643 #1646	 White, Almond, Beige, Khaki Available in Designer Finishes






NEPTUNE  
SCALLOP LENS LIGHT



Sizes	Scallop LV LED	Colors Available
• 4" • 5"	#1660 #1663	 White, Almond, Beige, Khaki Available in Designer Finishes

STAIR/SIDE LIGHT WITH (2) EA.  
COVERS








Colors Available	
	
	
	
White, Almond, Beige, Khaki, Black	
1.130" x 3.223"	#1598

Each stair/side light includes both a full and half cover allowing you to choose the look you prefer.

DOVE SIDE LIGHT



Colors Available	
	
	
	
White, Almond, Beige, Khaki, Black	
2.75" x 1.344"	#1599






FLUSH DECK LIGHT



Colors Available	
	
Frosted Acrylic	
0.995" x 0.685"	#1600

3" LED UNDER RAIL LIGHT



Colors Available	
	
	
	
White, Almond, Beige, Khaki, Black	
2.97" x 0.52" x 0.35"	
#1649	



# LOW VOLTAGE DC ACCENT LIGHTING

## Simple and Easy to Install

- No wires to cut – plug together wiring harness
- Single power supply for all lights
- No need for an electrician

## Long Lasting

- Weather resistant connectors and lights
- Long-lasting LED bulbs rated at 50,000 hours
- Housings are durable and UV stable

## Highly Energy Efficient

- Low Voltage DC Power Supply
- Dusk to Dawn light sensor
- Available with remote dimmer switch



**No Wire Cutting**



**Your Distributor of Choice for Vinyl, Steel  
and Aluminum Products**

**[www.polyvinylc.com](http://www.polyvinylc.com)**

**[marketing@polyvinylc.com](mailto:marketing@polyvinylc.com)**

**Corporate: 800-780-3362**

**Branch (GA,AL,TN,LA): 877-68-FENCE**

**Branch: (NC,SC,VA): 888-PVC-FENCE**