

STEEL & ALUMINUM

ESTATE GATES



ASSA ABLOY, the global leader in door opening solutions

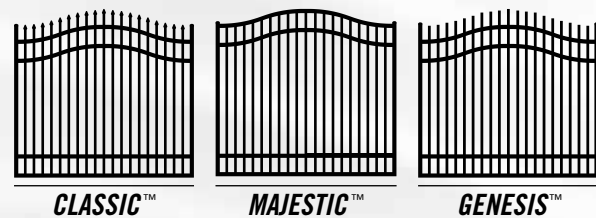


AMERISTAR[®]
ASSA ABLOY

STEEL

estate entry gates

Ameristar's Steel Estate Entry Gates are designed with a *timeless elegance* and are *built to last with welded construction at every intersection*. Manufactured to match the popular Montage II, Commercial & Plus product lines, Ameristar's Steel Estate Entry Gates have a *one of a kind compound arch*, which provides a seamless transition from ornamental fence to decorative gate.



SINGLE SWING ESTATE GATES

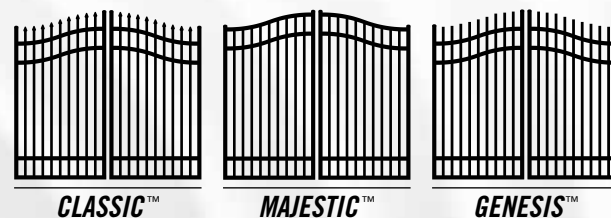
- 3-Rail or 4-Rail Options
- 4', 4½', 5', 6' or 7' Heights
- 8', 10', 12' & 14'* Nominal Openings

Gates match Montage II, Montage Commercial & Montage Plus | Artwork based on Montage II 4-Rail | *Openings available in Montage II only

DOUBLE SWING ESTATE GATES

- 3-Rail or 4-Rail Options
- 4', 4½', 5', 6' or 7' Heights
- 16', 18', 20', 22', 24', 26'* & 28'* Nominal Openings

Gates match Montage II, Montage Commercial & Montage Plus | Artwork based on Montage II 4-Rail | *Openings available in Montage II only

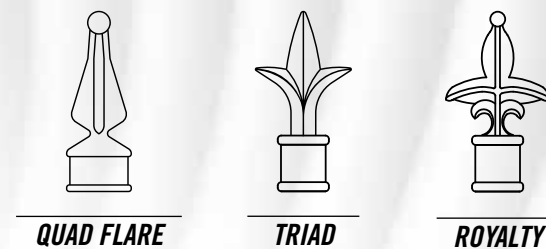


COLOR OPTIONS



*Only available for Aluminum Estate Entry Gates

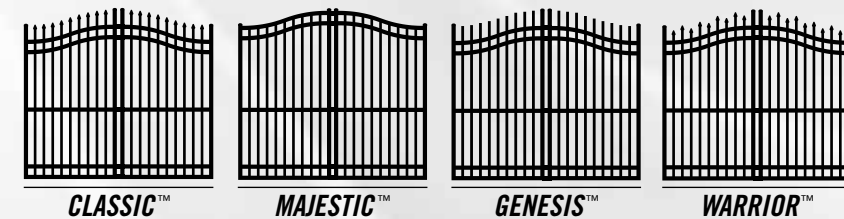
FINIAL OPTIONS



ALUMINUM

estate entry gates

The Aluminum Estate Entry Gate design is a statement in itself. It *adds value and aesthetics* to complete an *elegant old world look of wrought iron*. This unique design is fabricated from heavy aluminum profiles for *years of durable worry free operation*.



SINGLE SWING ESTATE GATES

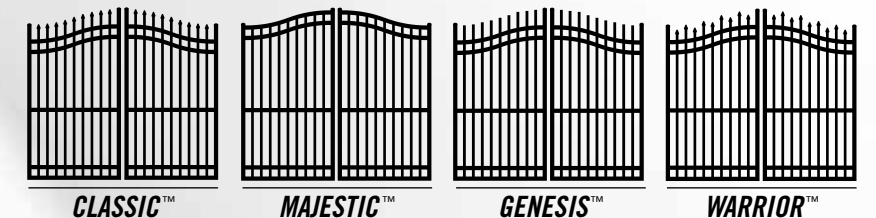
- 5-Rail
- 4', 5', 6' or 7' Heights
- 8', 10', 12' & 14' Nominal Openings

3/4" pickets standard | 1" pickets optional

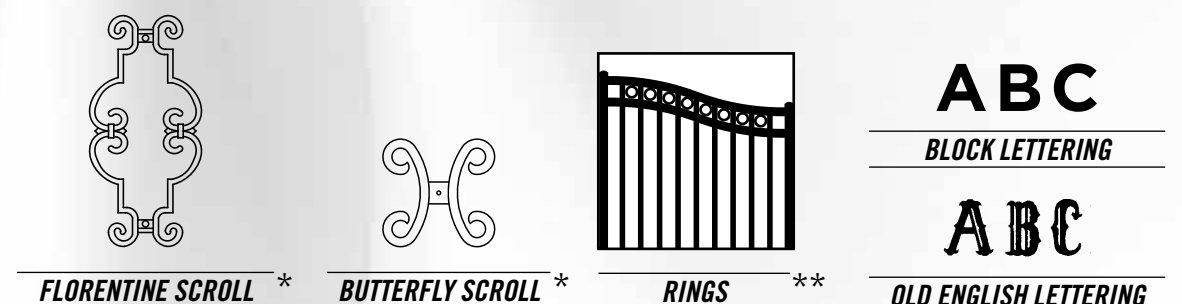
DOUBLE SWING ESTATE GATES

- 5-Rail
- 4', 5', 6' or 7' Heights
- 8', 10', 12', 14', 16', 18', 20', 22', 24', 26' & 28' Nominal Openings

3/4" pickets standard | 1" pickets optional



ADORNMENT OPTIONS



*Adornments fit 3/4" picket Estate Entry Gates | **Rings only available for Aluminum Estate Entry Gates

WHY CHOOSE AMERISTAR

➤ KNOWLEDGE & EXPERIENCE

Ameristar was chartered *30 years ago* in response to the *demand by consumers & specifiers for specialty fence products*. Ameristar offers an *aesthetically pleasing product* that is both *high in quality & affordability*. This has been achieved by maximizing *high-volume productivity*, increasing product design strength, and promoting *simplistic installation*.

➤ PROVEN CAPABILITY

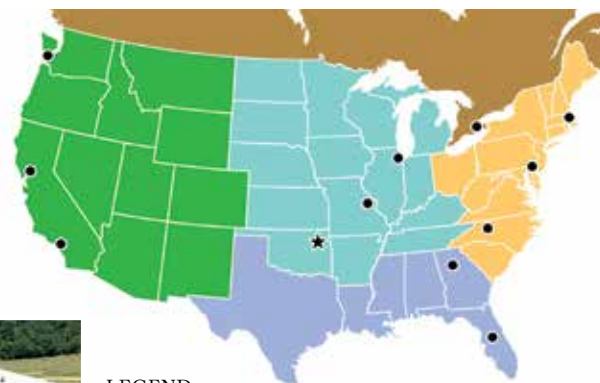
Ameristar's integrated *in-house process & extensive raw material inventory* results in much improved productivity and availability compared to the competition. By having a *vast finished goods inventory*, Ameristar is capable of *delivering finished products faster* than competitors who sublet the majority of their operations.

➤ INDUSTRY LEADERSHIP

Over the years Ameristar has continually *raised the bar* across the board in the *manufacturing of high quality*, innovative fencing products. Our demonstrated commitment to *upholding higher values* translates into superior products that *go far beyond* merely meeting minimum industry standards.



Ameristar's world headquarters, manufacturing & coil processing facilities in Tulsa, Oklahoma, USA.



LEGEND

- ★ Ameristar Headquarters
- Sales & Service Centers

#9724 | REVISED 06/2014



Your Distributor of Choice for Vinyl, Steel and Aluminum Products

www.polyvinylc.com

marketing@polyvinylc.com

Corporate: 800-780-3362

Branch (GA,AL,TN,LA): 877-68-FENCE

Branch: (NC,SC,VA): 888-PVC-FENCE

ASSA ABLOY, the global leader in door opening solutions

AMERISTAR®

ASSA ABLOY